

# MAGNETIC DIRT SEPARATOR

## JUPITER COMPACT



Compact magnetic dirt separator

Glass rinse to check filter status

Body in PA66 reinforced with glass fiber 30%

Available with single or double ball valve

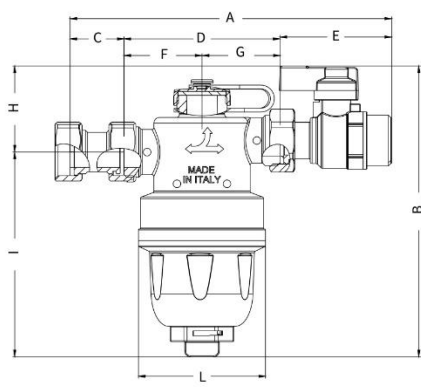
Eliminates all impurities in the system

It reduces the risk of corrosion

Easy installation and maintenance

Available with nickel plated brass parts

Patent pending



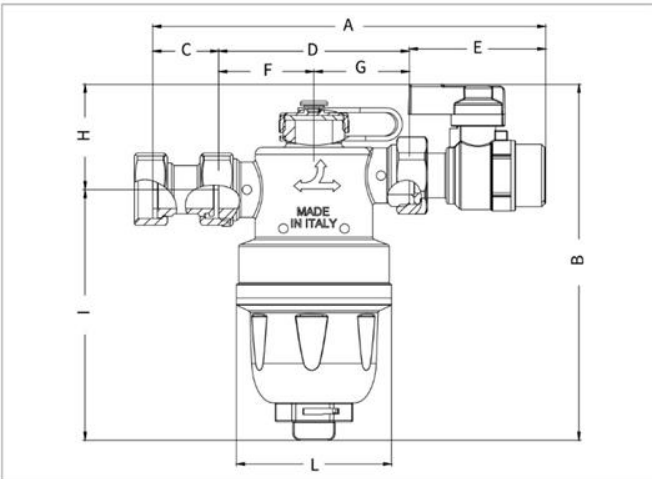
Code	Size	A	B	D	L	I	H
449531 006	3/4"	180	150	81	66	111,5	38,5

Pressure always under control.



## DESCRIPTION

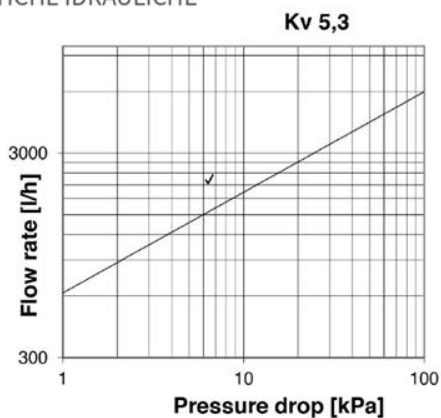
**Body:** PA66 + glass fibre 30%  
**Cartridge:** stainless steel AISI304  
**O-rings:** EPDM Perox  
**Valves:** brass  
**Fitting FF:** brass  
**Magnet:** neodymium



## DIMENSIONS

A:	180
B:	150
C:	25
D:	81
E:	55
F:	40.5
G:	40.5
H:	38.5
I:	111.5
L:	66

## CARATTERISTICHE IDRAULICHE



## TECHNICAL DATA:

**Magnet power:** 12.000 G  
**Mesh:** 800 microns  
**Compatible fluids:** water / water + glycol up to 50%  
**Flow rate:** Kv 5.2  
**Max pressure:** 3 bar  
**Temperature range:** 0° – 90° C



N. 225639

Pressure always under control.

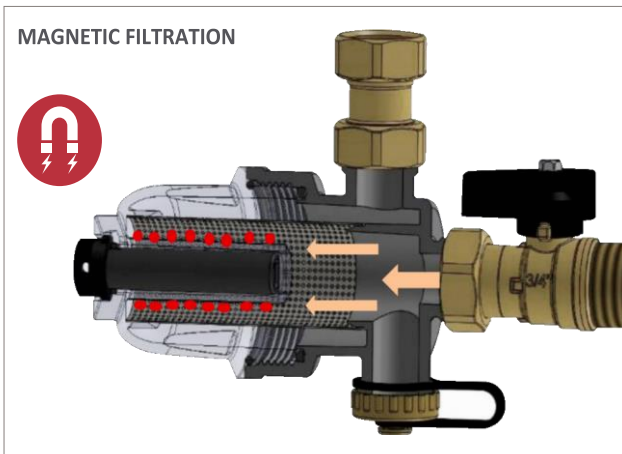


## DESCRIPTION

- A) Stainless steel cartridge
- B) Magnet
- C) Glass decantation chamber
- D) Main body with **double O-ring**
- E) Check valve (inlet side)
- F) Brass cap
- G) Swivel nut (boiler side)

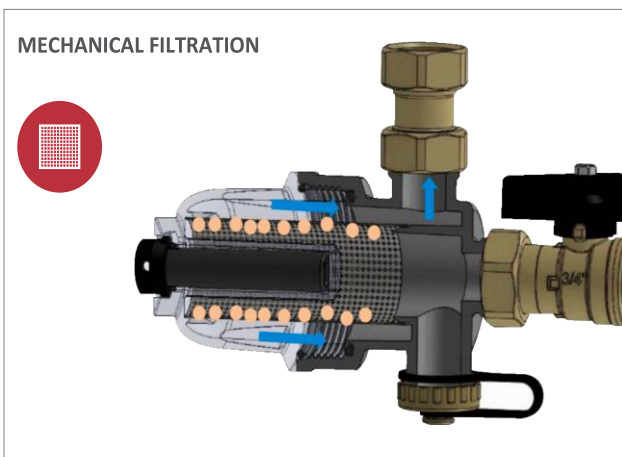
**JUPITER Compact** is a dirt separator which combines an effective separation of debris through a double passage of filtration, magnetic and mechanical. The special design, studied with the most advanced fluid dynamics techniques, favors and combines in all the positions of use, the important purification effect of the powerful magnet and the filter cartridge. The large decantation chamber near the magnet guarantees large quantities of storage allowing less frequent maintenance. Shapes and materials have been carefully selected to ensure performance, resistance and durability.

The compact dimensions and design allow installation in any system configuration without reducing filtering performance.



## ASSEMBLY

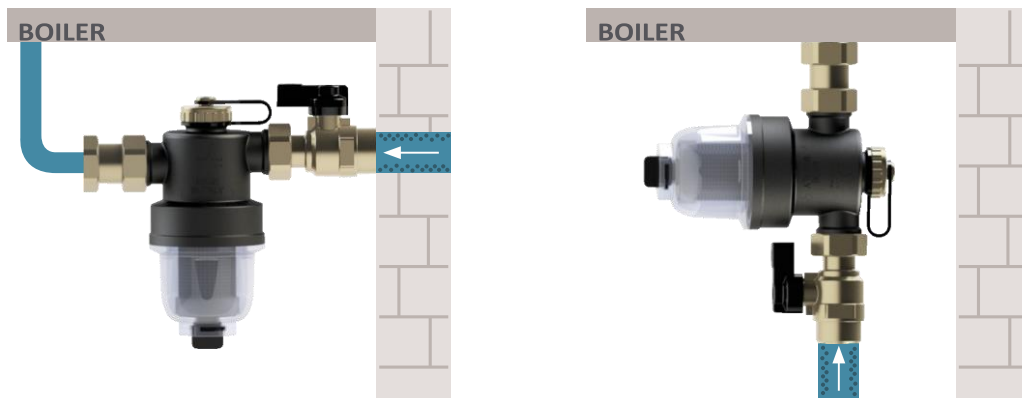
**JUPITER Compact** can be mounted both in a horizontal position and vertical position, allowing perfect filtration and cleaning thanks to the special T connection and the special design, the only one with particular simplicity and without compromise.



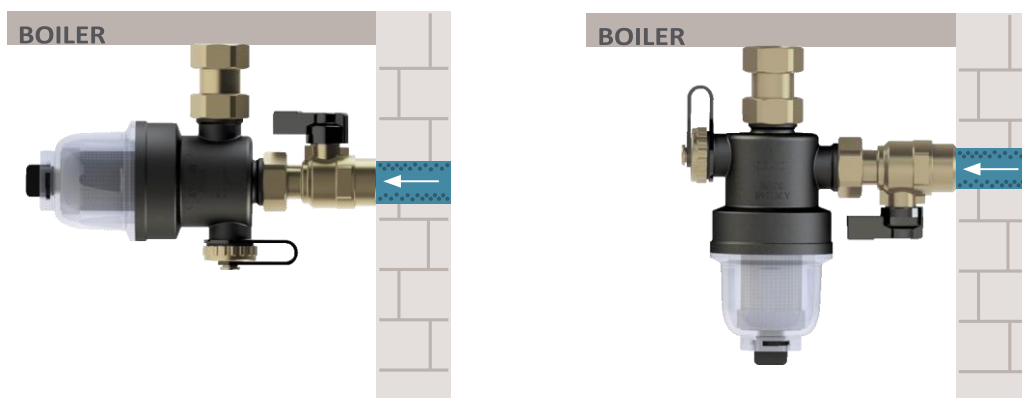
In combination  
with magnetic cartridge  
**JUPITER Compact**  
has a high filtering capacity  
to stop all non metallic debris  
**IN ANY POSITION OF  
INSTALLATION**

Pressure always under control.

### Connection with straight pipes



### Connection with elbow pipes



### INSTALLATION GUIDELINES:

- ▶ Jupiter Compact dirt separator should be installed in the return pipeline to the boiler.
- ▶ Loosen the decanter glass for special service using an open wrench 29mm.
- ▶ Carry out a standard cleaning after one month since first installation.

### CLEANING FREQUENCY:

- ▶ 1 month after first installation
- ▶ Then once per year.

## INSPECTION, CLEANING AND MAINTENANCE



**WARNING!** Before carrying out any inspection, cleaning or maintenance operation, turn off the boiler, close the shut-off valves upstream the dirt separator and wait for the components to cool down.

To clean the device, proceed as follows:

1. Close the shut-off valve upstream of the dirt separator.
2. Prepare a bucket for collecting liquids and unscrew the drain cock cap.
3. Unscrew the magnet cap directly with the aid of a 29 mm wrench. Make sure that the water is collected in a container of adequate size.

4. Once the water flow has stopped, remove the glass cover completely with the magnet (turning anti-clockwise). Remove the magnet with a 90° rotation to easily separate the ferrous debris from the magnet cover. Clean with water and a son-abrasive cloth till all debris and impurities.
5. Check both O-rings and seat has no damages, if this happen please replace with new ones. Reassemble in reverse order. In order to guarantee perfect hydraulic seal and, at the same time, avoid damaging the components, when reassembling the filter, follow the following tightening torques: - closing cap for magnet holder: 10 ÷ 12 Nm torque - lower drain plug: 6 ÷ 7 torque Nm. Check for traces of leaks before restore to service.



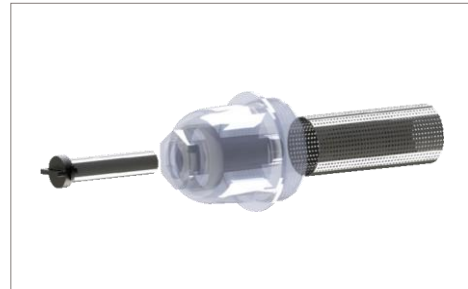
Close the ball valve



Open the drain cap



Place bucket for collecting liquid then turn anti-clockwise the glass cover using a 29 mm open wrench



Remove magnet by turning 90° then clean mesh and glass from any debris. Check conditions of O-rings and seals

## CONTENT OF THE PACKAGE

- ▶ JUPITER Compact dirt separator
- ▶ 1 ball valve MF with swivel nut 3/4"
- ▶ 1 3/4" brass plug
- ▶ 1 FF brass fitting 3/4" (or a second ball valve)
- ▶ 3 gaskets 3/4"